

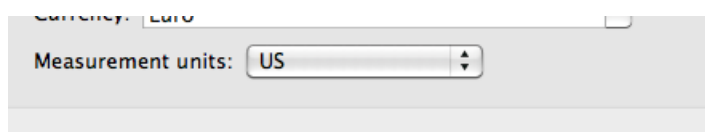
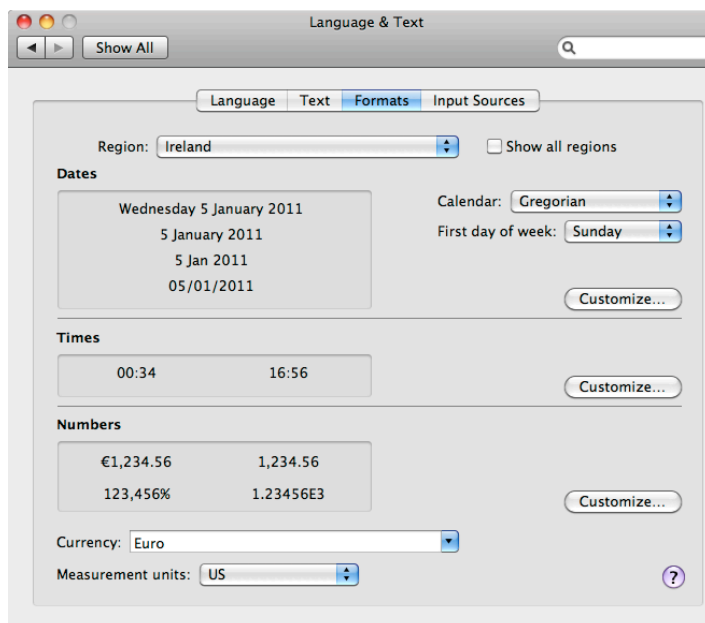
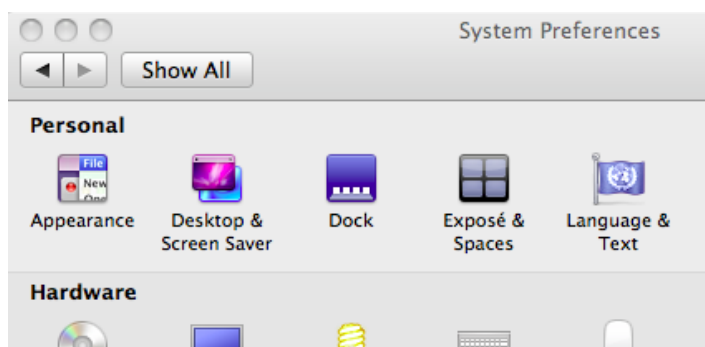
Guidelines for printing roll paper on the Epson 9880 printer

System Preferences

Set the Monitor colour profile to the most recent profile.

Set the **Measurement Units** in the **System Preferences** to US (Imperial) or Metric according to your needs. Note, most roll papers are referred to by their width in Imperial (US) units, e.g. 17", 24" and 44".

System Preferences > Language & Text > Formats > Measurement units



Epson 9880 Printer

Turn on printer.

Load roll paper, if required.

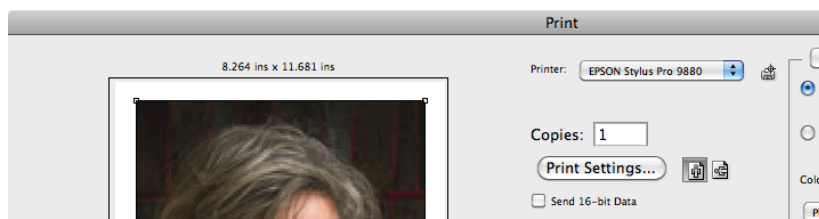
Align paper edge to guidelines at front of printer.

Ensure that the Roll Paper icon is selected in the display screen and not the single sheet icon. It should be visible on the left hand side.

Define the page size

Open Photoshop and go to the **Print** interface

Now open the **Print Settings . . .**

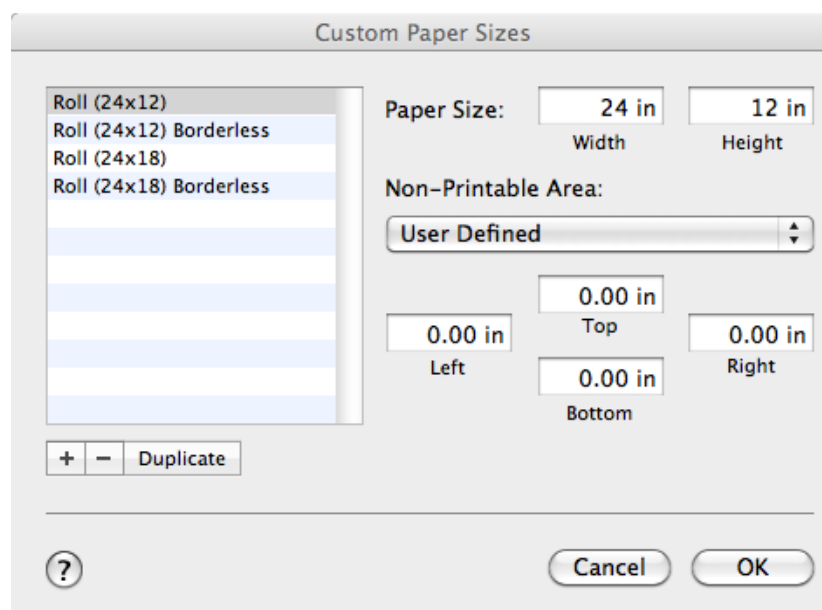


Next choose **Printer > Epson Stylus Photo 9880**

Then choose **Paper Size > Custom Size**, if no preset size is available,
or

choose an existing preset such as , **(17 x 30) roll**, **(24 x 48) roll**, **(44 x 60) roll**

Define the paper size you require from the **Custom Size** palette below.



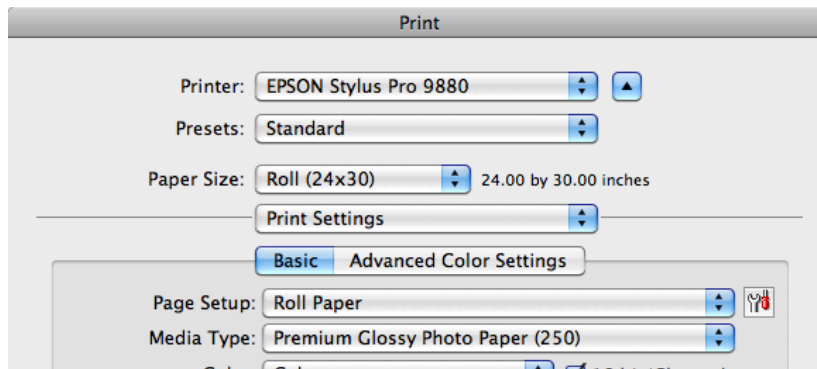
Enter “+” to make a new custom page and give it a name.

Define the page size and margins.

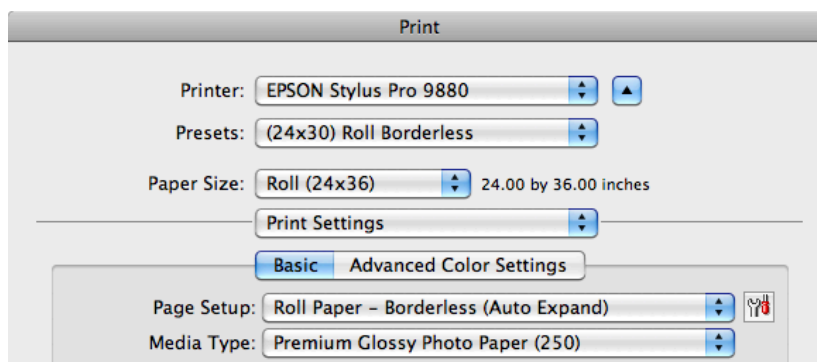
For borderless printing leave the margins set to zero.

Make a note of your settings as they will be lost once your account is closed!

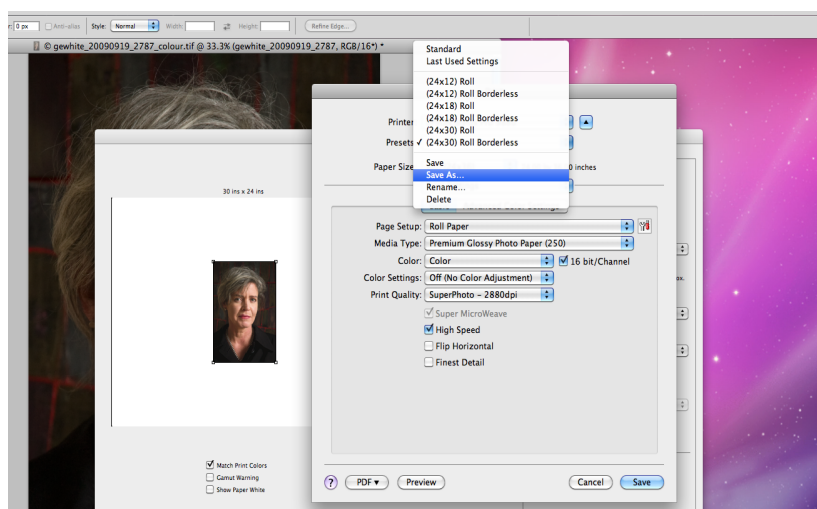
In the **Printer Driver** interface, select your page new preset in **Page Size** and **Page Setup** should be set to **Roll Paper**.



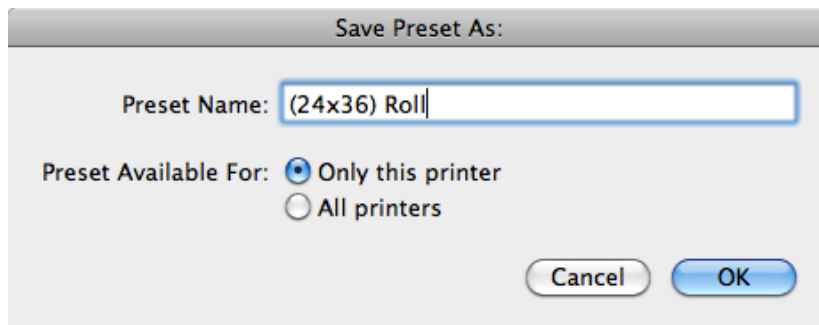
If you are making borderless prints then select your page new preset in **Page Size** but set **Page Setup** to **Roll Paper – Borderless (Auto Expand)**. This allows your image file to expand slightly to fill the full page area.



Complete the rest of your Photoshop print settings as normal.
Enable 16bit colour printing.
It is recommended that you save your print settings also as a preset.



Give the preset a name and description for the paper/printer setup you are using, e.g. **(24x36) Roll PJ Oyster**.
It should be available for: **Only this printer**.



A screenshot of a 'Save Preset As' dialog box. The title bar reads 'Save Preset As:'. Inside the dialog, there is a text field labeled 'Preset Name:' containing the text '(24x36) Roll'. Below this, there is a section labeled 'Preset Available For:' with two radio button options: 'Only this printer' (which is selected) and 'All printers'. At the bottom right of the dialog are two buttons: 'Cancel' and 'OK'.

Save Preset As:

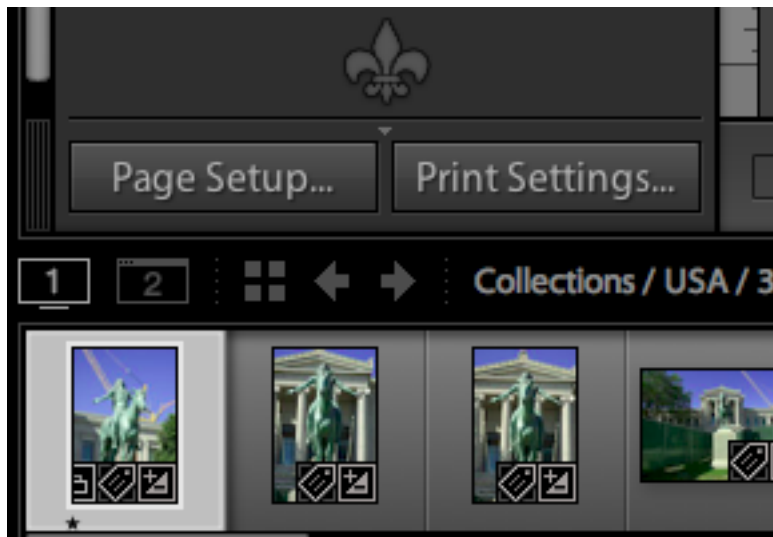
Preset Name: (24x36) Roll

Preset Available For: ☒ Only this printer
☐ All printers

Cancel OK

Roll printing with Lightroom

Printing through Lightroom is very similar to Photoshop. Page and Printer settings are found on the bottom left of the Lightroom's Print module. The settings are exactly the same as Photoshop.



Print settings in Lightroom are also as normally set, however 16 Bit Output needs to be enabled at the print stage and the printer driver stage.



Lightroom's page layouts can be easily used once page sizes have been defined. Similarly new layout templates can be easily made to suit roll paper pages.