

Sorting out printer errors



A quick and dirty manual

Sorting out printer errors

1	Epson 4900, 4880 & 4800 printers	
1.1	4880 and 4800 printers	4
1.2	4900 printers	6

Epson 4900, 4880 & 4800 printers

4880 and 4800 printers

Set paper source on printer panel



- Ensure that the paper source on the display indicates sheet paper.
- If not correctly set to **sheet paper**, set the **Left Arrow** to change the paper source from **Roll Paper** to **Sheet Paper**.

Loading paper

- Load sheet paper **face down** in the paper tray.
- Ensure the the guides are firmly in contact with the paper **without hindering the feeding of the paper** .
- Close the paper drawer fully and replace the lid.
- Ensure that the **Paper Size** has been correctly entered in the printer driver, plus **Sheet selected** not **Roll**, from Lightroom or Photoshop.

Wrong Paper source on printer error



- If the printer is set to roll paper and you are printing sheet, it will display a loading error and not print.
- Move the paper release lever to the **Released** position.

- Next, change the paper source selection to **Sheet** on the printer panel (see previous step above).
- Return the paper release lever.
- The paper may now need to be advanced manually, if so see the following step.

Advancing the paper manually



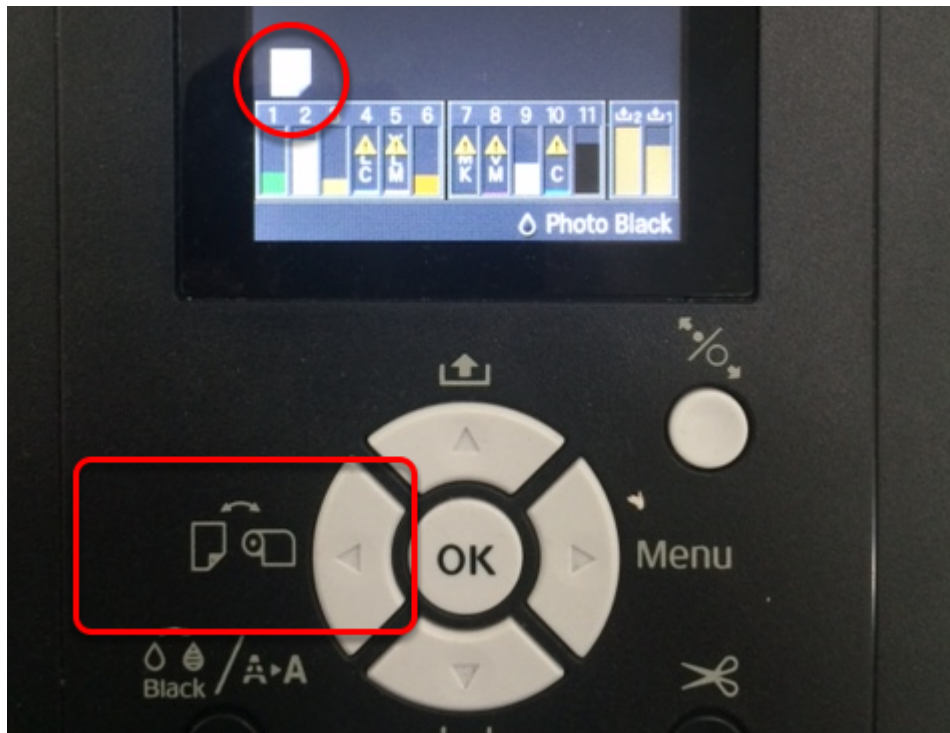
- To advance the paper, now press the **Up** arrow on the control panel.

Clearing a paper jam



- Open the top lid.
- Move the paper release lever to the **Released** position.
- Carefully remove the paper through the open lid.
- Return the paper release lever and close the lid.
- Reload the paper again if it is not damaged.
- The paper may now need to be advanced manually in order to continue printing.

Set paper source on printer panel

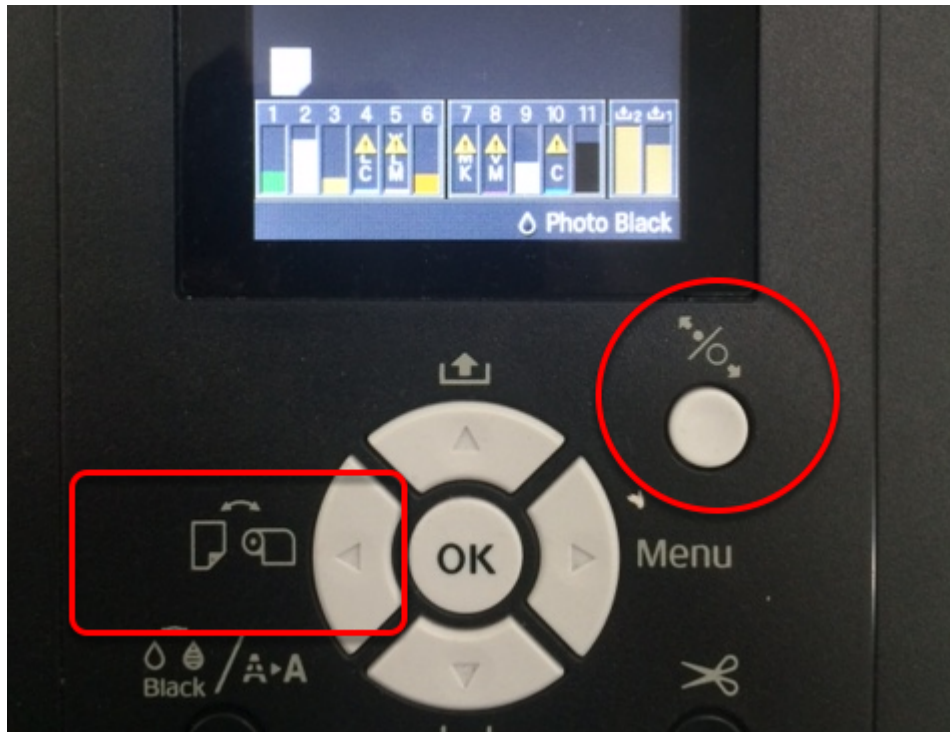


- Ensure that the paper source on the display indicates sheet paper.
- If not correctly set to **sheet paper**, use the **Left Arrow** to change the paper source from **Roll Paper** to **Sheet Paper**.

Loading paper

- Load sheet paper **face down** in the paper tray.
- Ensure the the guides are firmly in contact with the paper **without hindering the feeding of the paper** .
- Close the paper drawer fully and replace the lid.
- Ensure that the **Paper Size** has been correctly entered in the printer driver, plus **Sheet paper** selected not **Roll paper**, from Lightroom or Photoshop.

Wrong Paper source on printer error



- If the printer is set to roll paper and you are printing sheet, it will display a loading error and not print.
- Press the paper release button to release the roll feed..
- Next, change the paper source selection to **Sheet** on the printer panel (see previous step above).
- The paper may now need to be advanced manually, if so see the following step.

Advancing the paper manually



- To advance the paper, now press the **Up** arrow on the control panel.

Clearing a paper jam



- Open the top lid.
- Press the paper release button.
- Carefully remove the paper through the open lid.
- Press the paper release button and close the lid.
- Reload the paper again if it is not damaged.
- The paper may now need to be advanced manually in order to continue printing.