

Printing with Photoshop CS3

Photoshop CS3 & colour management

These notes apply only to Photoshop CS3

Users of Photoshop CS & CS2 should
download separate notes

Printing with profiles

- Photoshop, not the printer, manages the colour management.
- Select the correct profile for the paper/printer combination being used.
- The paper/printer profile directs the printer how to print the colours.
- The printer's colour management must therefore be turned off.

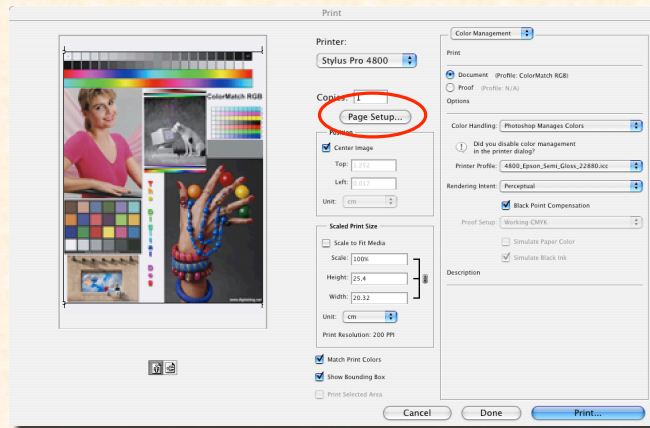
Print – step 1



- Open file in Photoshop
- Select
 - File > Print

Print – step 2

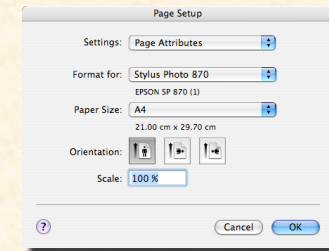
Select: Page Setup ...



Page Setup...

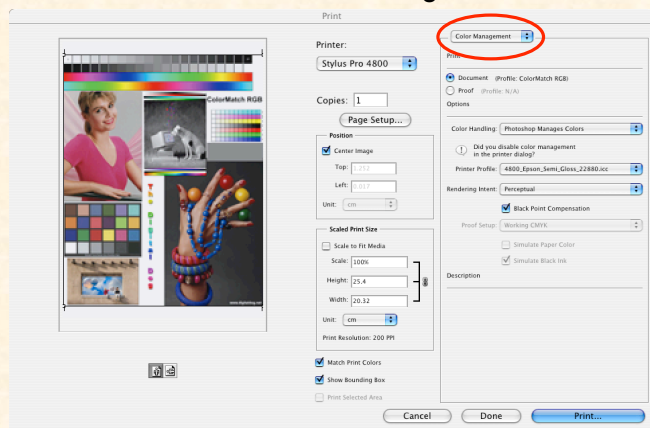
Set Page Attributes

- **Format for:**
 - *Printer to be used*
- **Paper Size:**
 - A4, A3 or A2



Print – step 3

Select: Colour Management



Paper/Printer Profiles

Paper/printer profiles are specified as follows:

(printer)_(paper surface)_(printer resolution)

For example:

2100_Upper_GLOSSY_2880

2100_Upper	>	Epson 2100 <i>Upper</i>
GLOSSY	>	Epson Premium Glossy Paper
2880	>	Printer DPI resolution setting

Maintained Paper Profiles

- Only the following papers are profiled:
 - Epson Premium Glossy
 - Epson Premium Semi Gloss
 - Epson Archival Matte
 - Epson Double Sided Matte
 - Realt Lustre Roll paper
- The paper/printer profile controls the output not the printer driver.

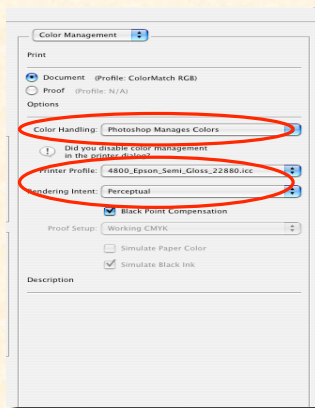
“Hey dude, where’s my profile?”



If the required paper/printer profile is not listed in Photoshop's list of profiles, then that paper has not been profiled for this printer.

Only use the specified papers if you want to achieve consistent and predicable results.

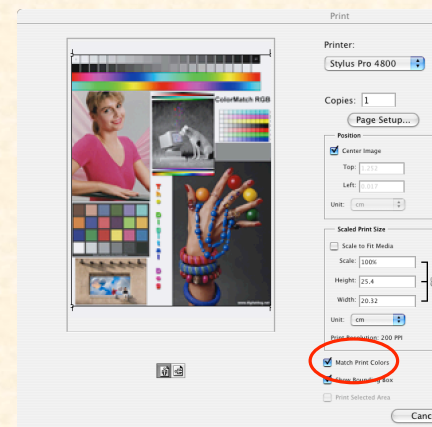
Selecting colour management



Select:

- Color Handling:
Photoshop Handles Colors
- Printer Profile:
(printer)_(paper surface)_(printer resolution)
- The correct profile will depend on the printer and paper combination to be used.
- Rendering Intent:
Perceptual
- Print

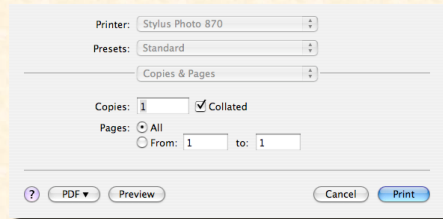
Soft Proofing



- When the paper profile is selected, a *soft proof* will display in the left panel
- Ensure that **Match Print Colors** is selected

Now press **Print**...

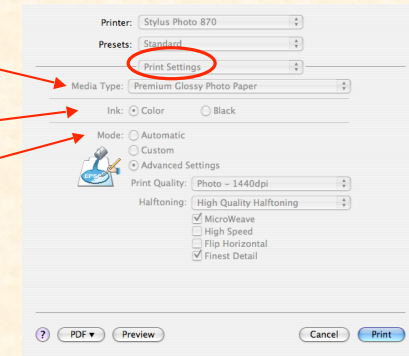
- This will open the **Print** dialogue box



Select **Print Settings**

Set as follows:

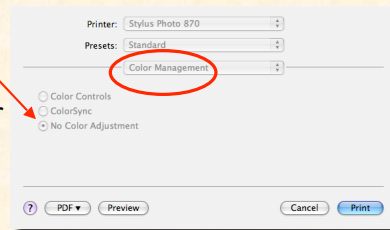
- Media Type:
 - Paper type/weight
Depending on paper
- Ink:
 - Color
- Mode:
 - Advanced Settings:
 - Print Quality:
 - 1440 or 2880 DPI
 - MicroWeave
 - On
 - High Speed:
 - On - faster
 - Off - slower



Select **Color Management**

- Select
 - **No Color Adjustment**

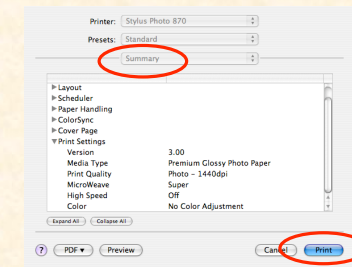
Note: The profile must make the colour adjustments to the printing process, not the printer driver.



Select **Summary**

- Check the Print Summary settings

... and press **Print**



Printing check list

Profile	Select the correct profile for the printer/paper combination being used.
Media Type	Select the appropriate paper surface type, e.g. Premium Glossy, Matte Heavy Weight etc.
Print Quality	The same resolution as the profile should be used, e.g. 2880 or 1440 DPI
Microweave	On
High Speed	Off - Slower printing, use for exhibition work On - Faster printing
Color Management	The printer's colour management must be <u>turned off</u> .

Profile	Select the correct profile for the printer/paper combination being used.
Media Type	Select the appropriate paper surface type, e.g. Premium Glossy, Matte Heavy Weight etc.
Print Quality	The same resolution as the profile should be used, e.g. 2880 or 1440 DPI
Microweave	On
High Speed	Off - Slower printing, use for exhibition work On - Faster printing
Color Management	The printer's colour management must be <u>turned off</u> .

References

- Evening M, *Adobe Photoshop CS3 for Photographers*, Focal Press, 2007
- Kelby, S, *The Adobe Photoshop Lightroom book for digital photographers*, New Riders, 2007
- Rodney, A, *Colour Management for Photographers*, Focal Press, 2005
- Fraser, B, et al, *Real World Color Management*, Peach Pit, 2004
- lightroom-news.com
- www.photoshopper.com/lightroom/index.html
- www.rawworkflow.com
- www.computer-darkroom.com
- www.digitaldog.net
- www.adobe.ie

- Evening M, *Adobe Photoshop CS3 for Photographers*, Focal Press, 2007
- Kelby, S, *The Adobe Photoshop Lightroom book for digital photographers*, New Riders, 2007
- Rodney, A, *Colour Management for Photographers*, Focal Press, 2005
- Fraser, B, et al, *Real World Color Management*, Peach Pit, 2004
- lightroom-news.com
- www.photoshopuser.com/lightroom/index.html
- www.rawworkflow.com
- www.computer-darkroom.com
- www.digitaldog.net
- www.adobe.ie

