

Assigning & converting profiles

A cautionary tale

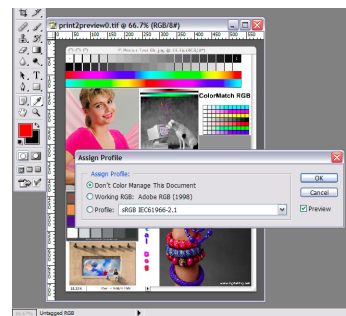
The choice

- Assign
- Convert to Profile
- Which one to use?
- What is the difference?

The fundamental question

- Does the file already have a profile?
 - No, then **Assign** a profile.
 - Yes, do you want to remove it?
 - If so then **Assign** > Do Not Color Manage
 - Yes, do you want to change it?
 - Then use **Convert to Profile**

Assign



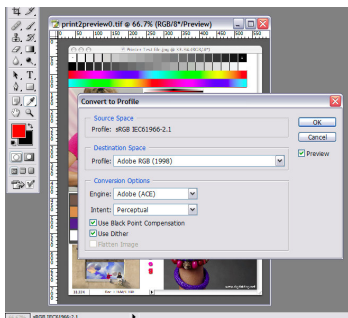
Use to:

- assign a profile if none present
- remove an embedded profile & not colour manage

Note:

- RGB numbers remain unchanged
- Visual colour & Lab numbers change

Convert to Profile



Use to:

- Change a file from one profile to another

Choose

- Engine > Adobe (ACE)
- Intent > Perceptual
- Check both boxes ☒

Note:

- RGB numbers change
- Visual colours & Lab numbers remain the same

Remember

- You are always in a Colour Space
- You can not **Not Colour Manage** a file
- The file is always being mapped to a specified colour space, or the working colour space if it does not have an embedded profile
- Otherwise there could be no image on screen!

References

- Evening M, *Photoshop CS2 for Photographers*, Focal Press, 2005
- Rodney, A, *Colour Management for Photographers*, Focal Press, 2005
- Fraser, B, et al, *Real World Color Management*, Peach Pit, 2004
- www.digitaldog.net
- www.apple.com/colsync
- www.adobe.ie
- www.computer-darkroom.com

Download notes
@
www.fixerstain.com

